

## Commercial Redevelopment of Warwick Court, London

### Waterproofing the Plant Room Floor of a Large Development

#### The Project

Warwick Court, the former Goldman Sach's headquarters on Paternoster Square in London, is being redeveloped by [Mace Group](#) after they won the £60m project in 2020. The development involves expanding the floor space to 300,000 sq ft, following a plan drawn up by architect [Fletcher Priest](#).

As part of the project, two basement levels were required to accommodate a car park, loading bay, plant rooms and storage.

#### The Solution

Mace approached Newton and our specialist contractor [ASF Waterproofing](#) to specify a waterproof and hard-wearing coating system for the floor of the plant rooms. As a result, ASF Waterproofing designed and installed a watertight system utilising Newton 110 WATstop and Newton 701-HB.

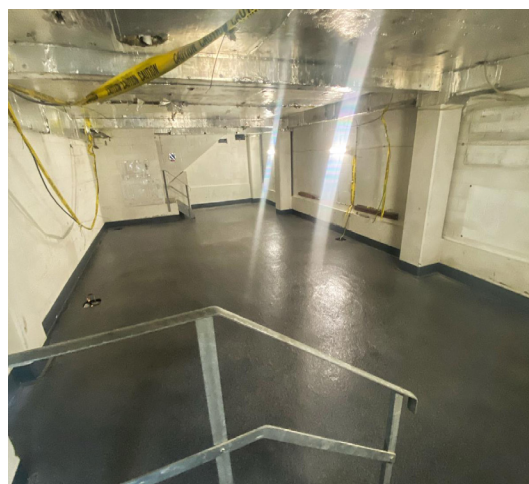
Firstly, after the surface had been properly prepared, the fibre-reinforced cement/epoxy workable mortar [110 WATstop](#) was applied as a waterproofing layer to the floor of the plant rooms, providing a smooth surface that also repairs the surface of concrete.

Secondly, the epoxy resin-based floor coating [701-HB](#), was applied afterwards to provide a hard-wearing coating to protect the waterproofing layer. ASF mixed in kiln-dried sand to the first coat for added grip, making the floor safer to walk on.

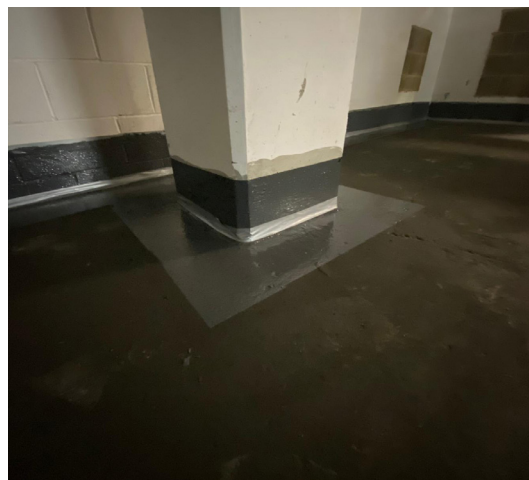
#### The Result

ASF Waterproofing provided a completely watertight solution following the guidelines set out in BS 8102:2009. The works were carried out to a high standard and delivered on time, despite the tight schedule.

Newton are proud to have been involved in this project, run by property developer Stanhope, who ran the development with an [all-female senior team](#) for the first time, setting a benchmark for the future of women in construction.



Newton 110 WATstop was used as a waterproof layer.



110 WATstop repairs the surface of concrete.





*"Having the opportunity to work with Newton Waterproofing and ASF Waterproofing Specialists on this project has been absolutely delightful, not only have the team installing the product been faultless, the finished article is outstanding.*

*We are proud to have worked closely with both Newton's and ASF to meet our clients needs and programme requirements, the advice, guidance and support of both businesses is second to none and I would highly recommend using them on all projects moving forward."*

Reece Hardy, Associate Director - Construction  
Mace Group

## The Products

### 110 WATstop

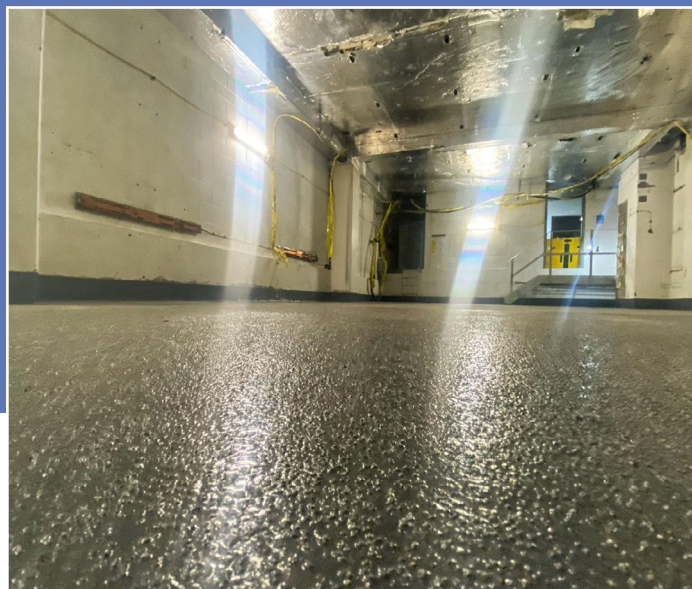
A three-component, fibre-reinforced cement/epoxy workable mortar suitable for surface repair and surface smoothing.

When mixed, 110 WATstop produces a workable mortar suitable for surface repair and surface smoothing. With the addition of up to 40% water, a slurry-like substance can be achieved that is suitable for damp proofing of walls and slabs and the waterproofing of concrete structures.

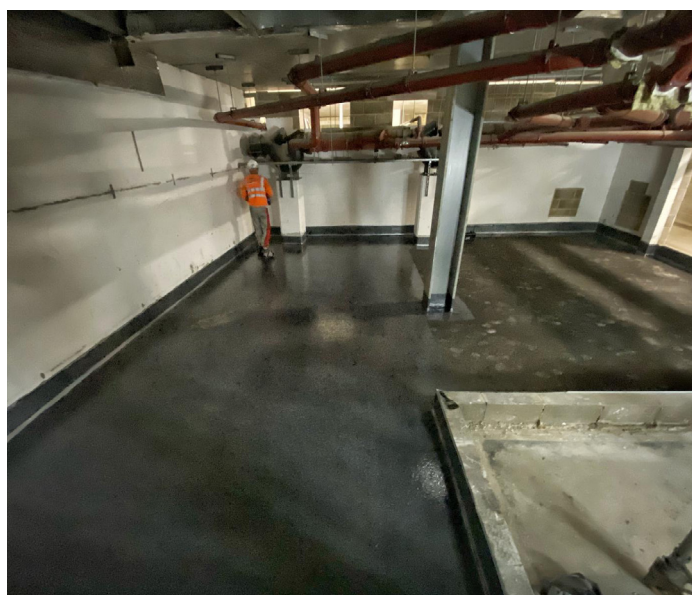
### 701-HB

A two-component, solvent-free, epoxy resin-based floor coating developed to provide protective and decorative properties to concrete, steel and other substrates.

When cured, 701-HB provides a hard-wearing and chemically resistant decorative coating to indoor areas that are subject to high levels of chemical and physical wearing agents, such as car parks, garages, warehouses and plant rooms.



Newton 701-HB was used as a protective floor coating.



The finished installation provides a watertight solution to the plant rooms.

## Newton Specialist Basement Contractors

Newton recommends that our systems are installed by one of our nationwide network of Newton Specialist Basement Contractors (NSBCs). Trained by Newton, NSBCs offer a full guarantee on the design and installation, and can act as Waterproofing Design Specialists.



The large redevelopment of Warwick Court in Paternoster Square.



[www.newtonwaterproofing.co.uk](http://www.newtonwaterproofing.co.uk)



[tech@newtonwaterproofing.co.uk](mailto:tech@newtonwaterproofing.co.uk)



+44 (0)1732 360 095