

Type B & C Waterproofing

BC-03 SPECIFICATION SHEET

Combined Waterproofing of Concrete Structure

Rev 4.1 - 26 October 2023

BUILD**WALL CONSTRUCTION:**

Reinforced Concrete Structure

FLOOR CONSTRUCTION:

RC Floor

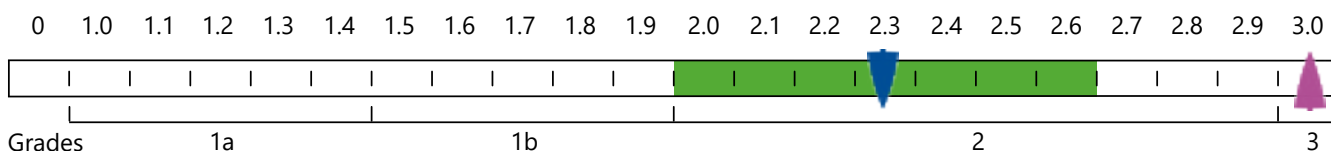
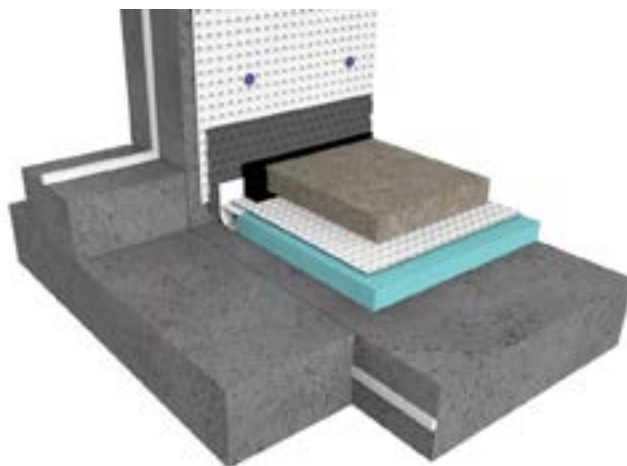
SITE:

Flat


NWI SCALE

Waterproofing solutions can only achieve environmental Grades 1a, 1b or 2.

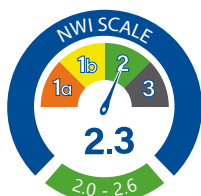
Refer to page 5 of the Newton Design Philosophy.



 NWI Score when ventilation has not been included.

 Ventilation, dehumidification or air conditioning is necessary; appropriate to intended use to achieve Grade 3 - BS 8102:2022.

This specification employs 2 forms of waterproofing (Type B - Integral Protection) to limit ground water ingressing behind the (Type C - Drained Protection) to ensure that the desired internal environment is achieved. The success of the waterproofing is dependent on the Type B structure being effective, especially at the construction joints.

**SPECIFICATION****TYPE B**

Newton HydroTank System designed to watertightness classification 1 as per BS EN 1992 part 3.

Install [Newton HydroTank System](#) to all construction joints and service penetrations providing integral protection.

TYPE C INSTALLED

Waterproof internally with [Newton CDM System](#) providing drained protection.

NEWTON WATERPROOFING INDEX

The Newton Waterproofing Index (NWI) is a unique scoring system that accurately assesses the level of

risk and potential success of specific waterproofing specifications.

The NWI score is awarded by a panel of experienced waterproofing design specialists and reflects the chances of success of that specification. The scoring system works in conjunction with the British Standard for waterproofing, which defines the three types of internal environments as Grades 1a, 1b, 2 and 3.

NOTES

To improve the NWI score and provide a grade 3 environment install Newton CDM System as per Newton Specification Sheet ABC-12.

The detailing of other building elements and termination details are available within the Newton Waterproofing specification library.

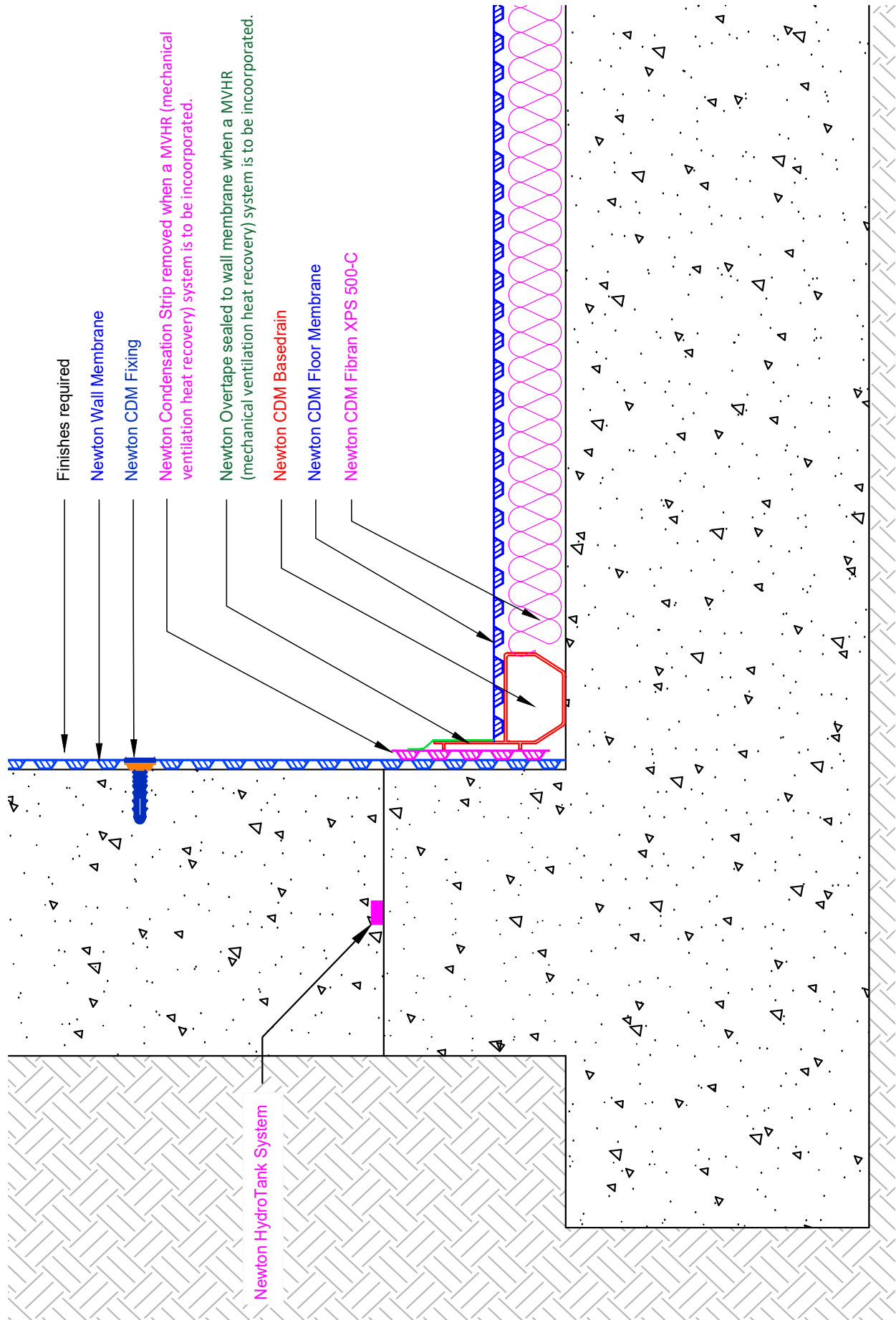
A-RATED INSURANCE

Tailor made insurance policies available depending on the specialist contractor and specification.

Any specification/advice provided is only valid if used with products supplied by John Newton and Company Ltd (trading as Newton Waterproofing Systems). Newton Waterproofing Systems reserve the right to update product literature at any time. Please always refer to our website for the latest versions.

BC-03

Combined Waterproofing of Concrete Structure



Type B & C Waterproofing

BC-03 SPECIFICATION OUTLINE

Combined Waterproofing of Concrete Structure

Specification	BC-03
Description	Combined waterproofing to RC structure. No gas protection.
Build	Reinforced concrete walls supported from an RC raft designed by an engineer with maximum permissible through crack width of the concrete conforming to BS EN 1992-3:2006, tightness class 1. As required by BS 8102:2022 for grades 1b and higher.
NEWTON HYDROTANK SOLUTION	All construction joints (day joints, shrinkage joints, movement joints etc) should be waterproofed with Newton System 300 waterbars to limit water ingress thorough joints in the structure.
NEWTON CDM SYSTEM	Maintainable basement waterproofing solution ideal for new-build basements and refurbishment projects. Comprises four components: Cavity Drain Membranes, Drainage, Pumps and Control Systems. Complies with the British Standard for Waterproofing.