

# Type A & C Waterproofing

## AC-10 SPECIFICATION SHEET

### Combined Waterproofing of Concrete Structure

Rev 4.0 - 19 January 2023

**BUILD****WALL CONSTRUCTION:**

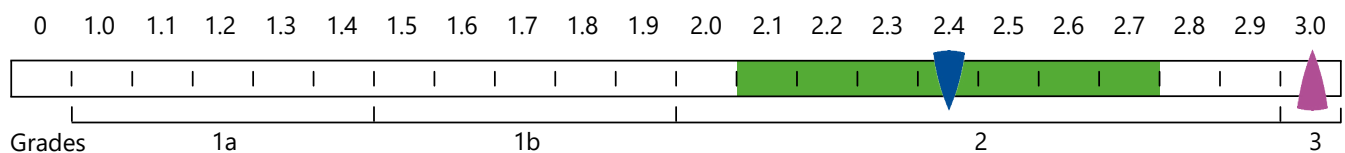
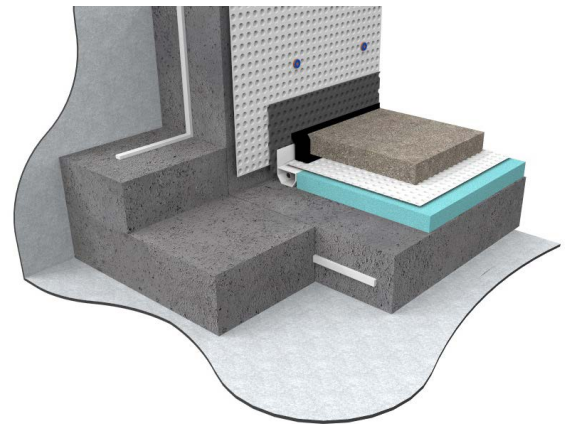
Reinforced Concrete (RC) Walls

**FLOOR CONSTRUCTION:**


Reinforced Concrete (RC) Raft

**NWI SCALE**

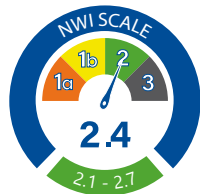
Waterproofing solutions can only achieve environmental Grades 1a, 1b or 2.  
Refer to page 5 of the Newton Design Philosophy.



 NWI Score when ventilation has not been included.

 Ventilation, dehumidification or air conditioning is necessary; appropriate to intended use to achieve Grade 3 - BS 8102:2022.

This specification employs 2 forms of waterproofing (Type A - Barrier Protection) to prevent ground water passing through the structural elements of the building and (Type C - Drained Protection) to ensure that the desired internal environment is achieved. The success of the waterproofing is dependent on the Type A system being effective at controlling the quantity of water passing through the structure so as not to inundate the Type C. There is therefore also a reliance on the Type C system being designed and installed correctly.

**SPECIFICATION****ANCILLARIES**

Install appropriate Newton waterbars to all construction joints and service penetrations.

**TYPE A APPLIED EXTERNALLY**

Waterproof the structure with [Newton HydroBond System](#) providing barrier protection.

**TYPE C INSTALLED INTERNALLY**

Waterproof internally with [Newton CDM System](#) providing drained protection.

**NEWTON WATERPROOFING INDEX**

The Newton Waterproofing Index (NWI) is a unique scoring system that accurately assesses the level of risk and potential success of specific waterproofing specifications. The NWI score is awarded by a panel of experienced waterproofing design specialists and reflects the chances of success of that specification. The scoring system works in conjunction with the British Standard for waterproofing, which defines the three types of internal environments as Grades 1a, 1b, 2 and 3.

**NOTES**

To improve the NWI score please see Newton Specification Sheet ABC-02.

The detailing of other building elements and termination details are available within the Newton Waterproofing specification library.

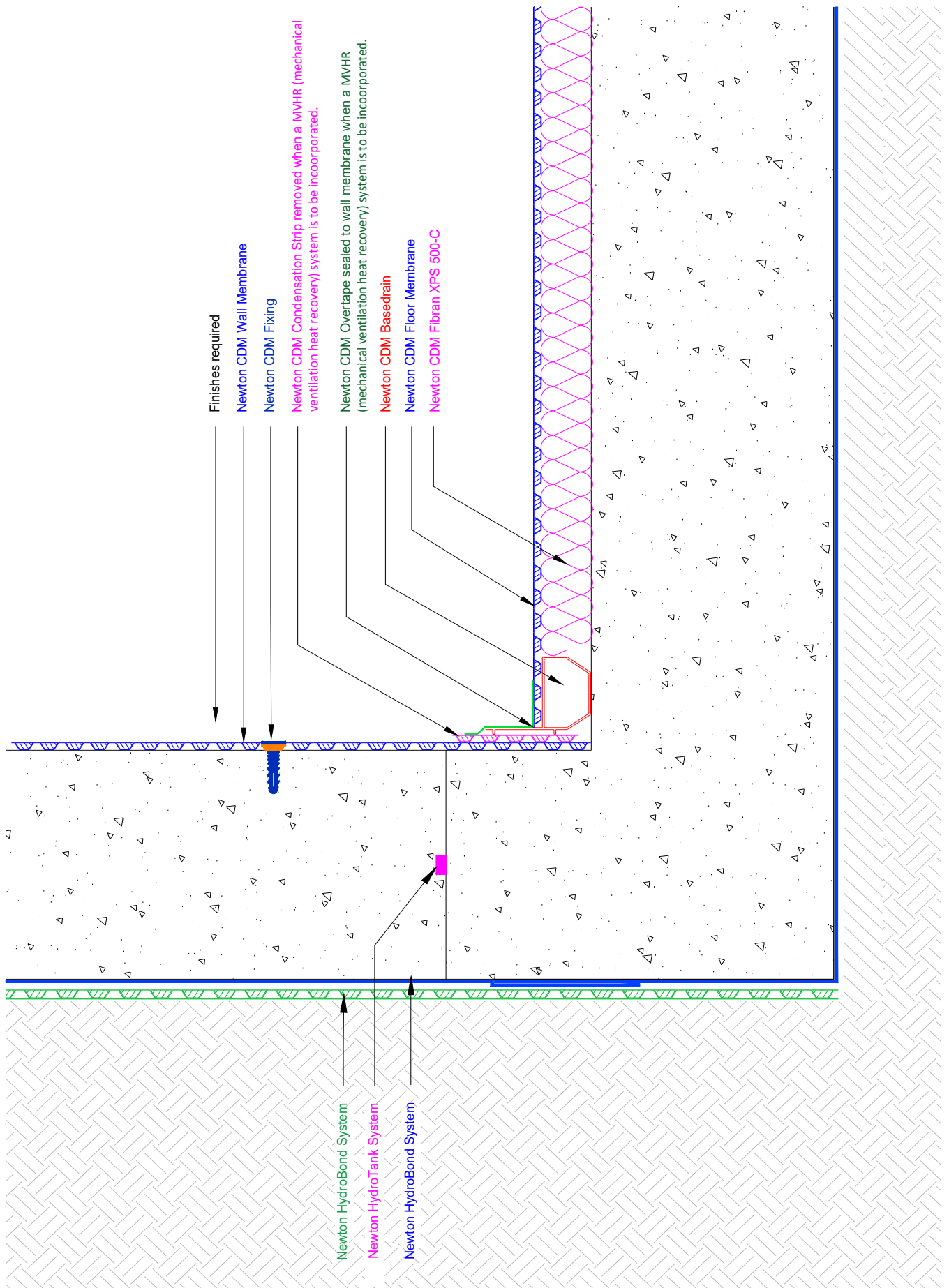
**A-RATED INSURANCE**

[Tailor made insurance policies available depending on the specialist contractor and specification.](#)

Any specification/advice provided is only valid if used with products supplied by John Newton and Company Ltd (trading as Newton Waterproofing Systems). Newton Waterproofing Systems reserve the right to update product literature at any time. Please always refer to our website for the latest versions.

# AC-10

## Combined Waterproofing of Concrete Structure



# Type A & C Waterproofing

## AC-10 SPECIFICATION OUTLINE

### Combined Waterproofing of Concrete Structure

Specification	AC-10
Description	Combined waterproofing to RC structure. No gas protection.
Build	Reinforced concrete walls, supported from an RC raft designed with flexural and through section crack widths limited to 0.2mm, and which conforms to BS EN 1992.
NEWTON HYDROBOND SYSTEM	The Newton HydroBond System provides a complete and continuous waterproof barrier to the external surface of any below ground structure
NEWTON HYDROTANK SYSTEM	All construction joints (day joints, shrinkage joints, movement joints etc) should be waterproofed with <a href="#">Newton HydroTank System</a> waterbars to limit water ingress thorough joints in the structure.
NEWTON CDM SYSTEM	Maintainable basement waterproofing solution ideal for new-build basements and refurbishment projects. Comprises four components: Cavity Drain Membranes, Drainage, Pumps and Control Systems. Complies with the British Standard for Waterproofing.