

Type B & C Waterproofing BC-16 SPECIFICATION SHEET

Combined Waterproofing RC Basement within Contig Piles

Rev 3.0 - 25 April 2023

BUILD

WALL CONSTRUCTION:

Contiguous Piles & Reinforced Concrete liner wall

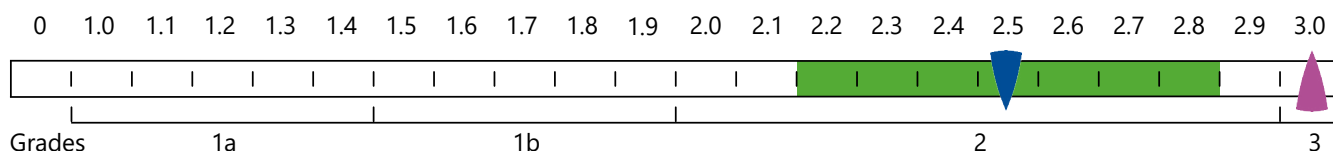
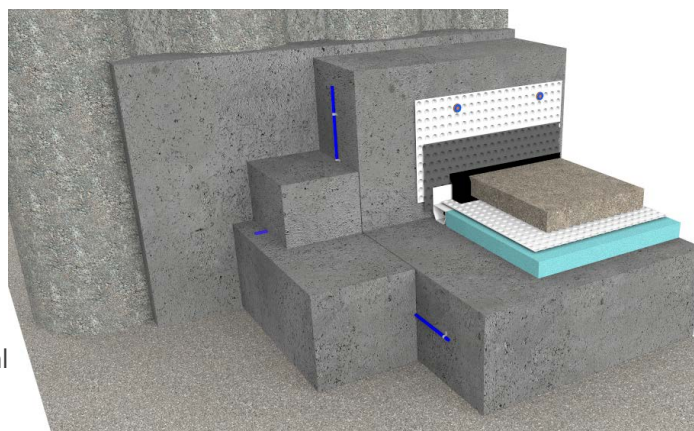
FLOOR CONSTRUCTION:

RC Raft


NWI SCALE

Waterproofing solutions can only achieve environmental Grades 1a, 1b or 2.

Refer to page 5 of the Newton Design Philosophy



 NWI Score when ventilation has not been included.

 Ventilation, dehumidification or air conditioning is necessary; appropriate to intended use to achieve Grade 3 - BS 8102:2022.

This specification employs 2 forms of waterproofing (Type B - Integral Protection) to limit ground water ingressing behind the (Type C - Drained Protection) to ensure that the desired internal environment is achieved. The success of the waterproofing is dependent on the Type B structure being effective, especially at the construction joints.



The NWI score is awarded by a panel of experienced waterproofing design specialists and reflects the chances of success of that specification. The scoring system works in conjunction with the British Standard for waterproofing, which defines the three types of internal environments as Grades 1a, 1b, 2 and 3.

SPECIFICATION

TYPE B

Newton HydroTank System designed to watertightness classification 1 as per BS EN 1992 part 3.

Install [Newton HydroTank System](#) to all construction joints and service penetrations providing integral protection.

TYPE C INSTALLED

Waterproof internally with [Newton CDM System](#) providing drained protection.

NEWTON WATERPROOFING INDEX

The Newton Waterproofing Index (NWI) is a unique scoring system that accurately assesses the level of risk and potential success of specific waterproofing specifications.

NOTES

To improve the NWI score and provide a grade 3 environment install Newton CDM System as per Newton Specification Sheet ABC-12.

The detailing of other building elements and termination details are available within the Newton Waterproofing specification library.

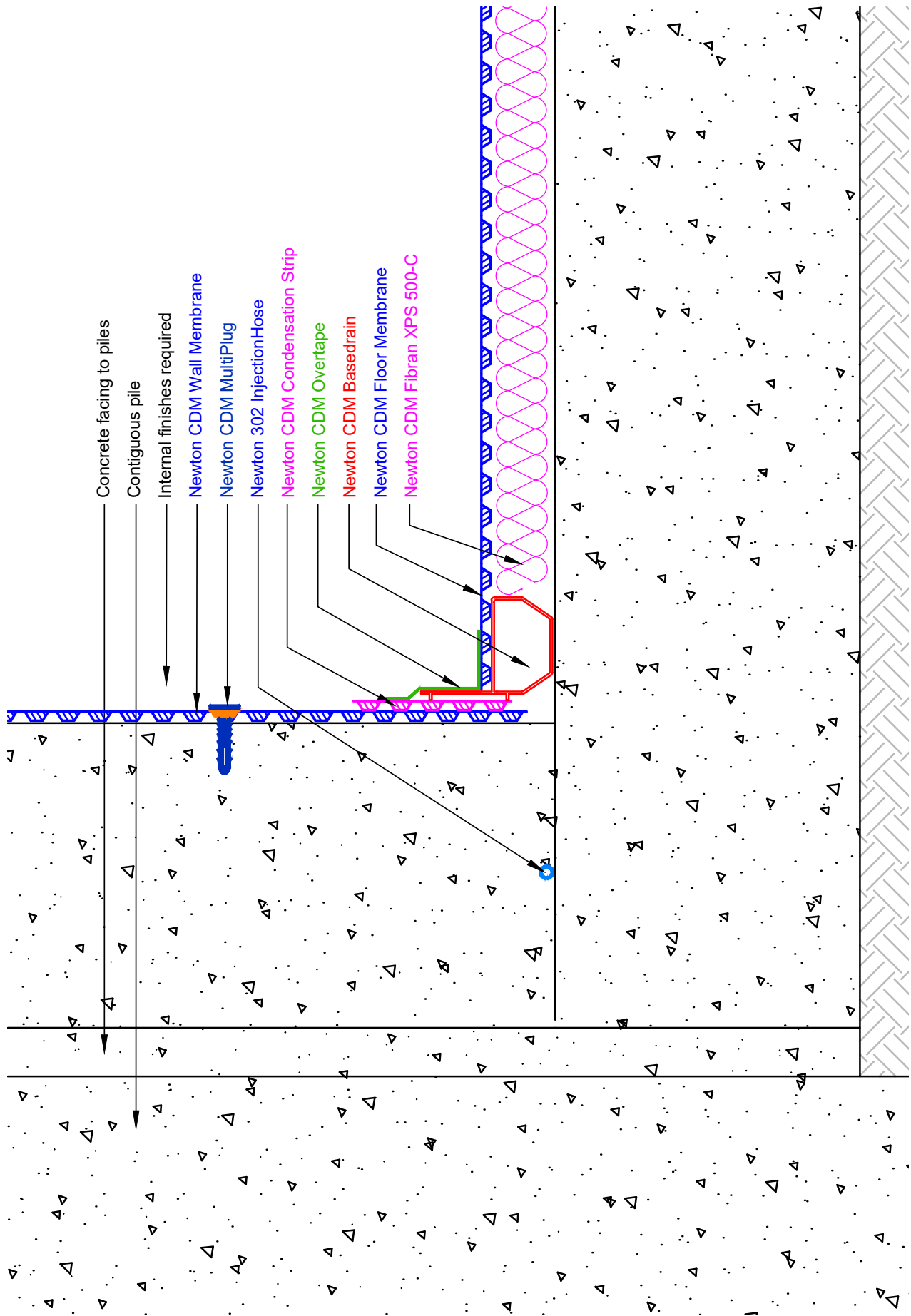
A-RATED INSURANCE

Tailor made insurance policies available depending on the specialist contractor and specification.

Any specification/advice provided is only valid if used with products supplied by John Newton and Company Ltd (trading as Newton Waterproofing Systems). Newton Waterproofing Systems reserve the right to update product literature at any time. Please always refer to our website for the latest versions.

BC-16

Combined Waterproofing RC Basement within Contig Piles



Type B & C Waterproofing

BC-16 SPECIFICATION OUTLINE

Combined Waterproofing RC Basement within Contig Piles



Specification	BC-16
Description	Combined waterproofing to RC structure. No gas protection.
Build	Contiguous piled walls, Reinforced concrete walls supported from an RC raft designed by an engineer with maximum permissible through crack width of the concrete conforming to BS EN 1992-3:2006, tightness class 1. As required by BS 8102:2022 for grades 1b and higher.
NEWTON HYDROTANK SYSTEM	All construction joints (day joints, shrinkage joints, movement joints etc) should be waterproofed with Newton HydroTank System waterbars to limit water ingress thorough joints in the structure.
NEWTON CDM SYSTEM	Maintainable basement waterproofing solution ideal for new-build basements and refurbishment projects. Comprises four components: Cavity Drain Membranes, Drainage, Pumps and Control Systems. Complies with the British Standard for Waterproofing.