

Type C Waterproofing

E-C-03 SPECIFICATION SHEET

Internal Waterproofing of Existing Structure

Rev 4.0 - 16 December 2022

BUILD

WALL CONSTRUCTION:

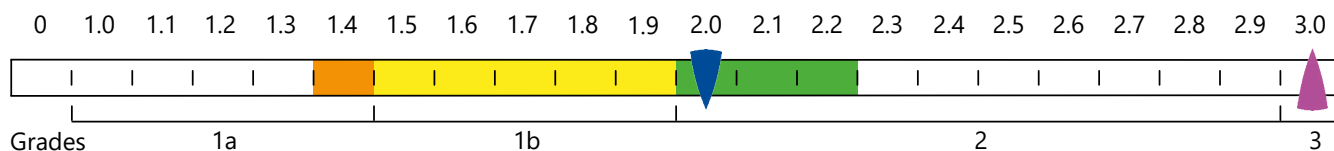
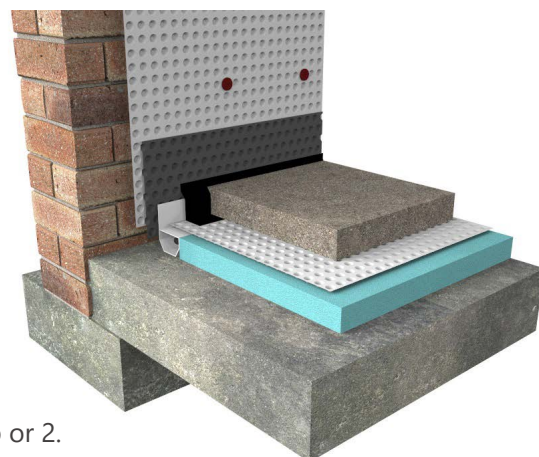
Existing Brick

FLOOR CONSTRUCTION:


EXISTING SLAB

NWI SCALE

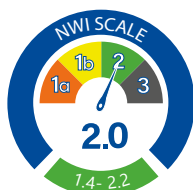
Waterproofing solutions can only achieve environmental Grades 1a, 1b or 2.
Refer to page 5 of the Newton Design Philosophy



 NWI Score when ventilation has not been included.

 Ventilation, dehumidification or air conditioning is necessary; appropriate to intended use to achieve Grade 3 - BS 8102:2022.

This specification employs 1 form of waterproofing (Type C - Drained Protection) to provide the desired internal environment is achieved. The effectiveness of the waterproofing is dependent on the Type C system being installed correctly.



NOTES

To improve the NWI score please see Newton Specification Sheet E-CA-04.

The detailing of other building elements and termination details are available within the Newton Waterproofing specification library.

SPECIFICATION

TYPE C INSTALLED INTERNALLY

Waterproof internally with [Newton CDM System](#) providing drained protection.

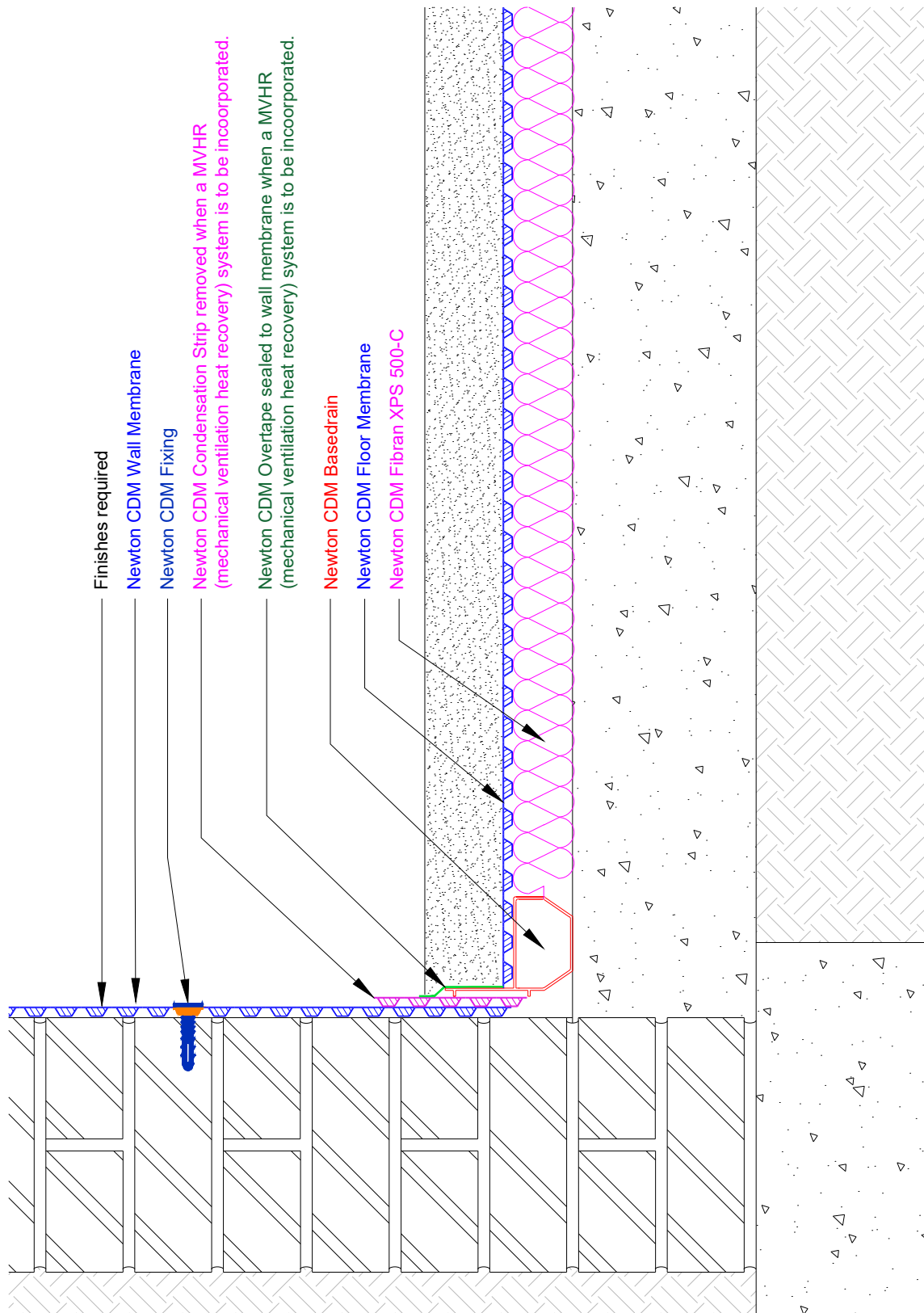
NEWTON WATERPROOFING INDEX

The Newton Waterproofing Index (NWI) is a unique scoring system that accurately assesses the level of risk and potential success of specific waterproofing specifications. The NWI score is awarded by a panel of experienced waterproofing design specialists and reflects the chances of success of that specification. The scoring system works in conjunction with the British Standard for waterproofing, which defines the three types of internal environments as Grades 1a, 1b, 2 and 3.

A-RATED INSURANCE

[Tailor made insurance policies available depending on the specialist contractor and specification.](#)

Any specification/advice provided is only valid if used with products supplied by John Newton and Company Ltd (trading as Newton Waterproofing Systems). Newton Waterproofing Systems reserve the right to update product literature at any time. Please always refer to our website for the latest versions.



Type C Waterproofing

E-C-03 SPECIFICATION OUTLINE

Internal Waterproofing of Existing Structure



Specification

Description

Build

NEWTON CDM SYSTEM

E-C-03

Drained waterproofing to existing concrete slab and Existing Brick wall structure. No gas protection.

Existing walls and slab to comply with section 10.1 of the BS8102:2022.

Maintainable basement waterproofing solution ideal for new-build basements and refurbishment projects. Comprises four components: Cavity Drain Membranes, Drainage, Pumps and Control Systems. Complies with the British Standard for Waterproofing.