



## LUXURY NEW-BUILD WATERPROOFING, SURREY

### Waterproofing Lower-Ground Floor Apartments on a Sloping Site

#### LUXURY NEW-BUILD, SURREY

[Nomad Developments](#) is a prominent London-based Real Estate Developer, full service Interior Design Studio and Project Manager. Their expertise covers multi-unit development projects, extensive renovations and bespoke private projects. This is achieved by working in collaboration with a trusted team of highly skilled architects, designers and craftspeople.

Their new-build complex of luxury apartments in Surrey consists of nine meticulously designed apartments, crafted with an unwavering commitment to detail and sustainability.

In order to deliver such a high-quality build, Nomad enlisted Newton specialist contractor [MacLennan Waterproofing](#) to design and install a robust and reliable waterproofing strategy that would ensure the longevity and integrity of the project.

MacLennan's involvement began at pre-construction stage, collaborating with the design team and providing valuable insights on incorporating compliant waterproofing measures into the overall building design. This ensured that all parties were aligned on the best approach from the outset.



The new-build structure was built into a steeply sloping site



# Luxury New-Build Waterproofing, Surrey

## Waterproofing Lower-Ground Floor Apartments on a Sloping Site

### PROJECT SCOPE

MacLennan collaborated with the client to create a robust waterproofing strategy. The Code of Practice for waterproofing, [BS 8102:2022](#), recommends that two forms of waterproofing are employed where the risk of failure is unacceptable.

As the project required a completely dry and habitable below ground environment, any water ingress would be unacceptable. Two forms of waterproofing protection were therefore essential.

### THE SOLUTION

The primary form of protection used [HydroCoat 104 Super](#). Applied directly to the concrete, this crystalline coating prevents moisture movement through the concrete capillaries and cracks.

As secondary protection, MacLennan installed a comprehensive [Newton CDM System](#) to the internal spaces. This maintainable and guaranteeable cavity drain waterproofing system ensures long-term protection for both the structure and its residents.

Thanks to the sloping site MacLennan used gravity to drain water from the CDM System into the surface water drainage. Whilst this removed the need for sumps and pumps, it was crucial to ensure that the drainage would not back up and surcharge the CDM System, causing a failure of the system.

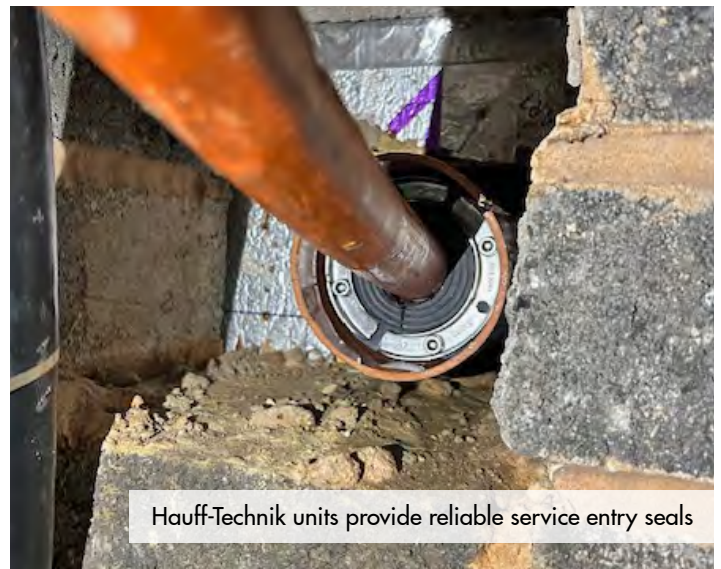
Lastly, MacLennan ensured that all service entries into the new structure were effectively sealed against water and gas with Newton's [Hauff-Technik mechanical seals](#) for cables and pipes.

### THE RESULT

MacLennan delivered a comprehensive and fully compliant waterproofing system within the project time frame and budget. The waterproofing of these luxury apartments was also assured by MacLennan's own installation guarantee, backed by comprehensive professional indemnity insurance, and demonstrating the quality and reliability of their installation.



Specialist fixings are used to install the cavity drain membrane



Hauff-Technik units provide reliable service entry seals





# Luxury New-Build Waterproofing, Surrey

## Waterproofing Lower-Ground Floor Apartments on a Sloping Site

### FEATURED PRODUCTS

- [HydroCoat 104 Super](#) - The active chemicals within HydroCoat 104 Super combine with the free lime and moisture present within the capillaries to form insoluble crystalline complexes which effectively block the capillaries and any minor shrinkage cracks to prevent any further movement of moisture to provide a totally dry surface to the concrete.
- [CDM System](#) - A comprehensive Type C waterproofing system that will usually be suggested as one of the forms of waterproofing to provide superior levels of protection against water, where a completely dry internal environment is required.
- [Hauff-Technik Sealing Systems](#) - Hauff-Technik are one of Europe's leading manufacturers of completely reliable sealing systems for cable, pipe and line entries. Their innovative solutions are guaranteed to provide absolute tightness against ground water and gases.



The CDM System delivers a completely dry environment

### NEWTON SPECIALIST CONTRACTOR:



### Newton Specialist Contractors

We recommend that our systems are installed by one of our nationwide network of Specialist Basement Contractors (NSBCs). Trained by us, NSBCs offer a full guarantee on the design and installation, and can act as Waterproofing Design Specialists.



The new-build will be protected from water for years to come